

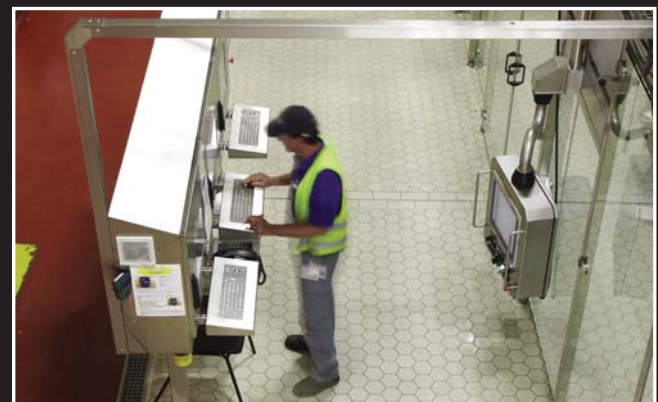
# ACID PROOFING and INDUSTRIAL FLOORING



PROTECTION OF CONCRETE AND STEEL AGAINST THE STRONGEST ACIDS, ALKALIS AND SOLVENTS



PROVIDING INDUSTRIAL FLOORING SOLUTIONS USING SPECIALTY INDUSTRIAL TILES AND RESINOUS SYSTEMS



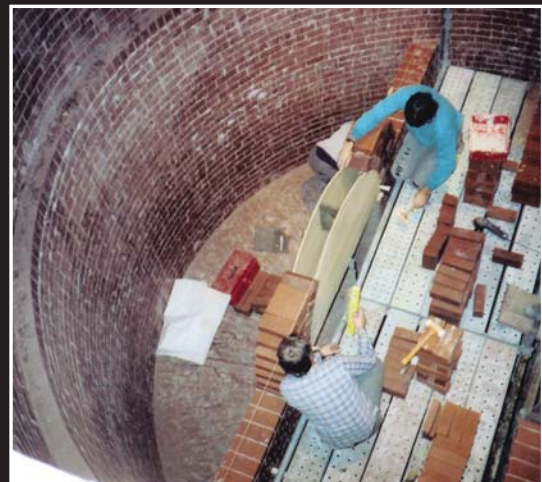


Metz offers our clients a complete acid brick and tile package.

Metz provides membrane, mortar and movement joint materials. We also offer the highest quality acid and carbon bricks or tiles as required to meet the particular service conditions.

Special shapes are available to enable lining of vessels, chimney stacks etc.

Metz can assist right from the design stage to ensure a long lasting acid resistant system is achieved at your site.





Metz can provide a broad range of acid resistant materials including:

- Epoxy and Epoxy Novolacs
- Vinyl Esters and Furanes
- Potassium Silicates
- Viton® Fluoropolymers
- Polyurethanes

Metz products are formulated as:

- Coatings, Linings and Membranes
- Toppings and Concretes
- Castable and Gunning materials
- Adhesives and Mortars
- Movement Joints and Caulks





No other flooring can provide the durability and performance of a correctly specified and installed industrial tiled floor. Industrial tiles provide an enormous range of factory manufactured slip resistant surfaces in many colours, thicknesses and formats.

Metz provides a complete industrial tile flooring system by manufacturing the specialty fixing materials and matching these materials with the appropriate tile for your site.

In Australia Metz can then install this floor system, providing our clients with a unique single point of responsibility warranty.



# Industrial Flooring RESINOUS FLOORING



Resinous flooring systems are available to suit all applications and budgets. If a simple sealer is all that is required to harden the surface, minimise wear and suppress dust, Metz has the right product.

Alternatively your facility may require a higher build, easy to clean, hygienic floor topping.

Or perhaps you have heavy constant traffic with slippery floor contaminants or corrosive chemical spillages to contend with.

Whatever the condition Metz has a solution and we can install every product we manufacture. Metz or our distributors can offer a meaningful single point of responsibility warranty for your project.



Metz has been a supplier and manufacturer of specialist building materials since it was founded in Melbourne on the 25th of June 1953. Metz today remains a proudly Australian owned company. Our Quality Accredited manufacturing facility is still located in Melbourne, with our head office in Sydney and a branch office in Brisbane. From these three offices we operate Australia-wide as well as exporting materials to Asia, the Pacific and the Middle East.

In Australia a core difference between Metz and our competitors is the ability to offer our clients a unique single point of responsibility - local material manufacture combined with full installation services. The ability to install all the materials we offer means Metz's material knowledge, practical site experience and therefore technical responsiveness is unsurpassed.

In overseas markets Metz regularly send experienced supervisors for training of our distributor network and for ensuring quality installations are achieved on site.

Please contact one of the Metz offices or your local distributor for any further assistance.

*Your local Metz Distributor:*



### Head Office

M-H Building, Level 8  
728-730 Vo Van Kiet St., Ward 1, Dist 5,  
Ho Chi Minh City, Vietnam

Tel: +84 8 3838 2546

Fax: +84 8 3838 2547

Email: [info@htd-vn.com](mailto:info@htd-vn.com)

Website: [www.htd-vn.com](http://www.htd-vn.com)



## METZ LOCATIONS

### Head Office - SYDNEY

15A Stanton Road  
Seven Hills NSW 2147, Australia

Postal: PO Box 4076  
Marayong NSW 2148, Australia

Phone: +61 2 9671 1311  
Facsimile: +61 2 9671 4292

email: [sydney@metz.net.au](mailto:sydney@metz.net.au)

### Office & Manufacturing - MELBOURNE

6 University Place  
Clayton North VIC 3168, Australia

Postal: PO Box 191  
Mount Waverley VIC 3149, Australia

Phone: +61 3 9561 6144  
Facsimile: +61 3 9561 6944

email: [melbourne@metz.net.au](mailto:melbourne@metz.net.au)

### Office - BRISBANE

Unit 16, 42 Smith Street  
Capalaba QLD 4157, Australia

Postal: PO Box 152  
Capalaba QLD 4157, Australia

Phone: +61 7 3823 5555  
Facsimile: +61 7 3823 5552

email: [brisbane@metz.net.au](mailto:brisbane@metz.net.au)